

# Flowflex<sup>®</sup> PLUS



## RSV + Flu A/B + COVID Home Test

A rapid test for the detection and differentiation of respiratory syncytial virus (RSV), Influenza A, Influenza B, and/or SARS-CoV-2 antigens in anterior nasal swab specimens.



Fast



Easy to Use



Trusted

# Flowflex Plus RSV + Flu A/B + COVID Home Test

The Flowflex Plus RSV + Flu A/B + COVID Home Test is a lateral flow immunoassay intended for the qualitative detection and differentiation of respiratory syncytial virus (RSV), influenza A, influenza B, and SARS-CoV-2 protein antigens directly in anterior nasal swab samples from individuals with signs and symptoms of respiratory tract infection. Symptoms of respiratory infections due to RSV, influenza, and SARS-CoV-2 can be similar.

This test is for non-prescription home use by individuals aged 14 years or older testing themselves, or adults testing individuals aged six (6) months or older. All negative results are presumptive and should be confirmed with an FDA-cleared molecular assay when determined to be appropriate by a healthcare provider. Negative results do not rule out infection with RSV, influenza, SARS-CoV-2 or other pathogens. Individuals who test negative and/or experience continued or worsening symptoms, such as fever, cough and/or shortness of breath should therefore seek follow-up care from their healthcare provider.

- Results in 15 minutes
- 24 months shelf life
- Store between 36 to 86 °F
- Small sized packaging makes for easy travel and storage
- Self-collected anterior nasal swab specimens from individuals aged 14 years or older
- Sample collection by an adult for children ages 2 to 13
- Sample collection by 2 adults with swab guard for children 6 to 23 months
- Excellent performance when compared to highly sensitive PCR tests

## Clinical Performance

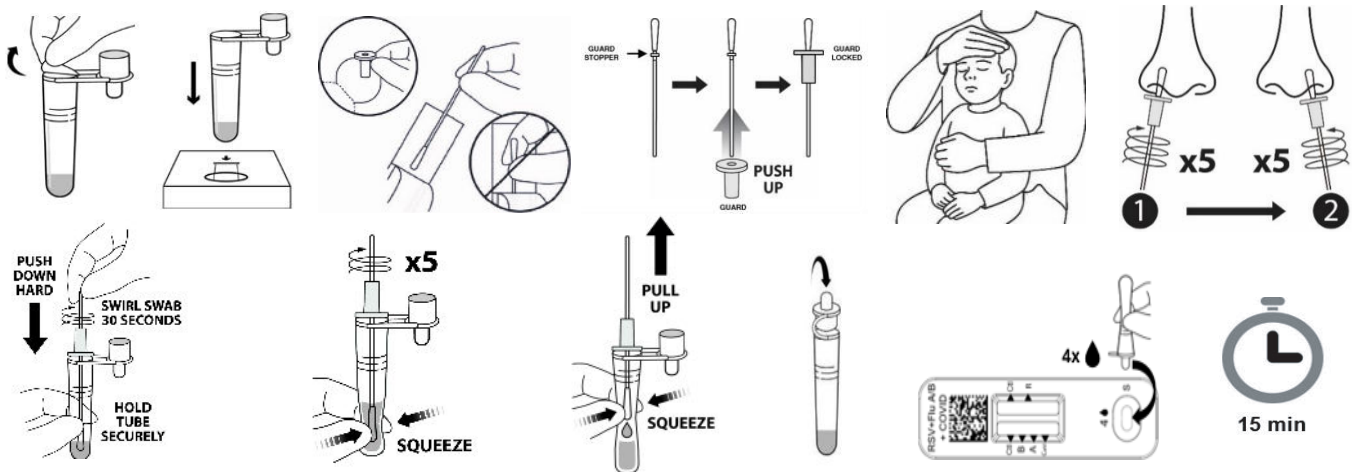
The Flowflex Plus RSV + Flu A/B + COVID Home Test was compared to highly sensitive PCR tests. The Flowflex Plus RSV + Flu A/B + COVID Home Test correctly identified 91.6% of positive specimens and 99.9% of negative specimens of COVID-19, 92.9% of positive specimens and 99.8% of negative specimens of Flu A, 92.9% of positive specimens and 99.9% of negative specimens of Flu B, and 94.1% of positive specimens and 99.8% of negative specimens of RSV.

## Materials Provided

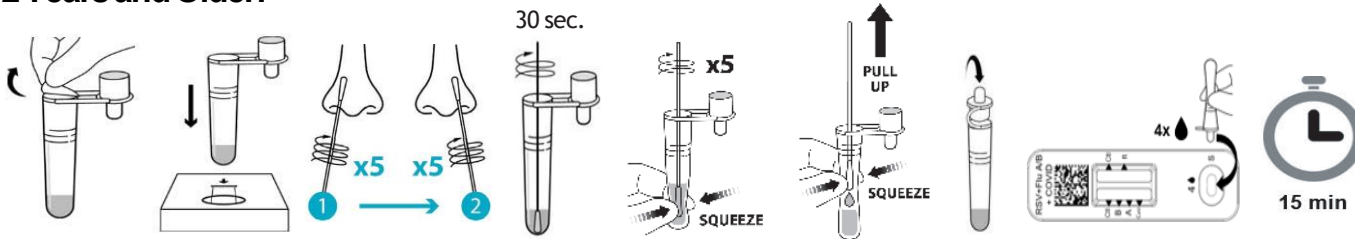
- Test Cassette(s)
- Quick Reference Instructions (English & Spanish)
- Extraction Buffer Tube(s)
- Nasal Swab(s)
- External Tube Holder - Package of 25 tests
- Swab Guard(s)

## Test Procedure and Interpretation

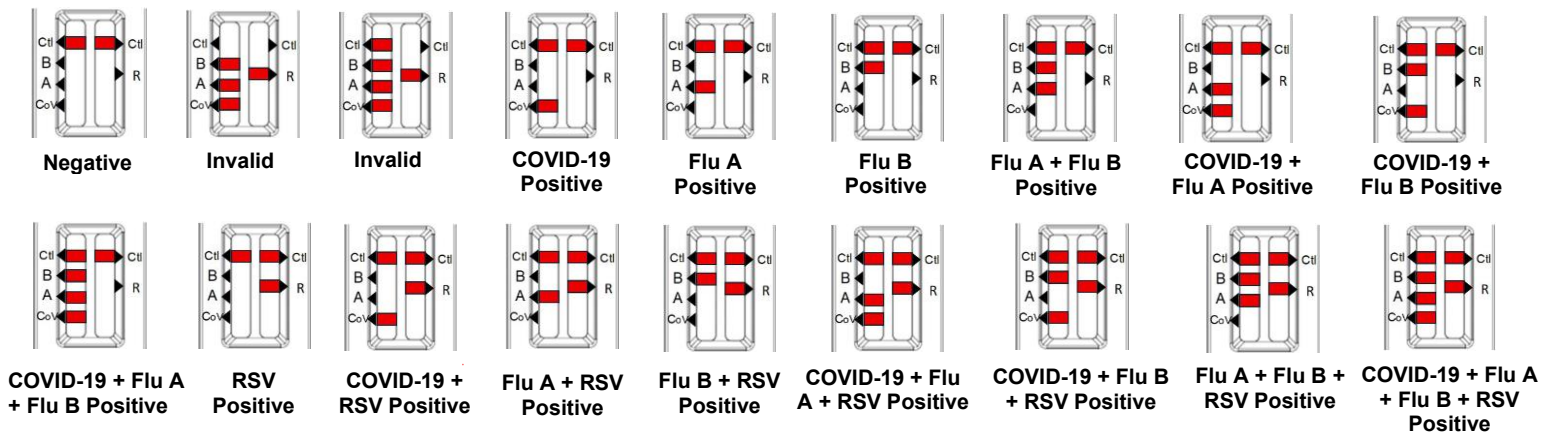
### Infants (6 Months - 23 Months):



### 2 Years and Older:



### Results Interpretation:



## Ordering Information

Product Name	Catalog No.	Format	Specimen	Package
Flowflex Plus RSV + Flu A/B + COVID Home Test	L03A-R1445	Cassette	Nasal Swabs	1 Test/Kit
Flowflex Plus RSV + Flu A/B + COVID Home Test	L03A-R1545	Cassette	Nasal Swabs	2 Tests/Kit
Flowflex Plus RSV + Flu A/B + COVID Home Test	L03A-R1645	Cassette	Nasal Swabs	5 Tests/Kit
Flowflex Plus RSV + Flu A/B + COVID Home Test	L03A-R1745	Cassette	Nasal Swabs	25 Tests/Kit



Distributed by

**JANT** PHARMACAL  
CORPORATION  
LABORATORY & POINT OF CARE DIAGNOSTICS

Jant Pharmacal Corporation  
16530 Ventura Blvd., Suite 512  
Encino, CA 91436  
Tel: 800.676.5565  
Email: [info@jantdx.com](mailto:info@jantdx.com)  
Web: [jantdx.com](http://jantdx.com)